



# TISSOT

SWISS WATCHES SINCE 1853

## WRIST-SIZING INSTRUCTIONS FOR STAINLESS STEEL BRACELETS

### STEP 1

Print this file and cut out the ruler (on the left).



### STEP 2

Place the watch dial on top of your wrist and wrap the ruler around your wrist.



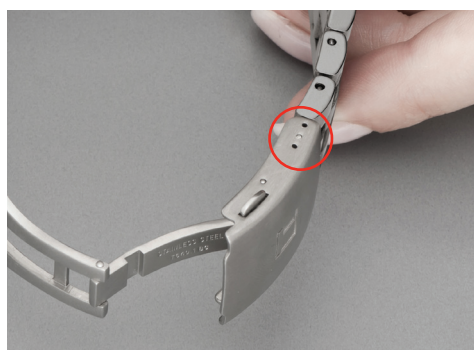
### STEP 3

Once the ruler is fully wrapped around your wrist, write down the size that is aligned with the red line (below the watch's dial). Use this number to select the closest option from the "Bracelet Size" menu.



### STEP 4

After receiving your watch, you can, if necessary, finely adjust the length of the strap by moving the pin through the clasp's holes.



cm

1

2

3

4

5

6

7

8

9

10

11

12

13

14

15

16

17

18

19

20

MESURE UP TO THIS LINE →

Experience more at [www.tissot.ch](http://www.tissot.ch)

  
**TISSOT**  
SWISS WATCHES SINCE 1853

## RUBBER STRAP ADJUSTMENT INSTRUCTIONS

### **STEP 1**

Open the clasp.



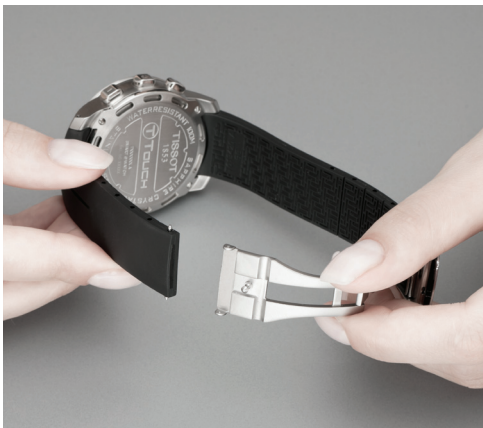
### **STEP 2**

Push the pin out using a paper clip...



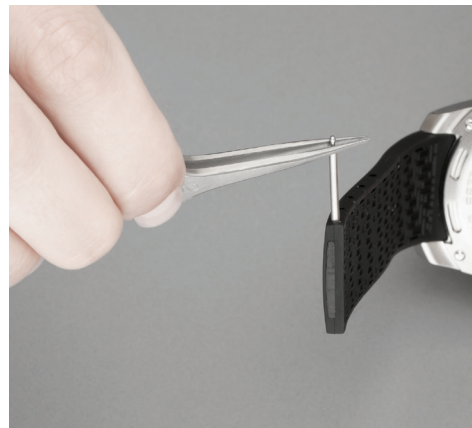
### **STEP 3**

...and remove the bracelet.



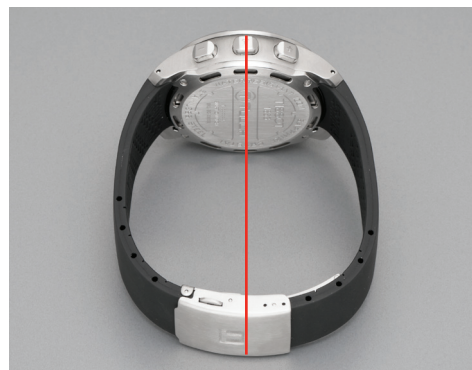
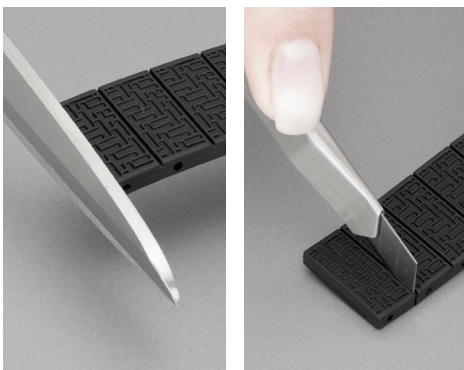
### **STEP 4**

Remove the pin.



### **STEP 5**

Following the notches, cut the rubber strap using scissors (or a cutter). When possible, make sure the two parts of the rubber strap are cut so that the clasp and the watch head remain centered once the bracelet is closed.



## RUBBER STRAP ADJUSTMENT INSTRUCTIONS

### **STEP 6**

Insert the pin.



### **STEP 7**

Fix the bracelet.



### **STEP 8**

If necessary, you can finely adjust the length of the strap by moving the pin through the clasp's holes.

